



MCS19-35 Carton Stapler



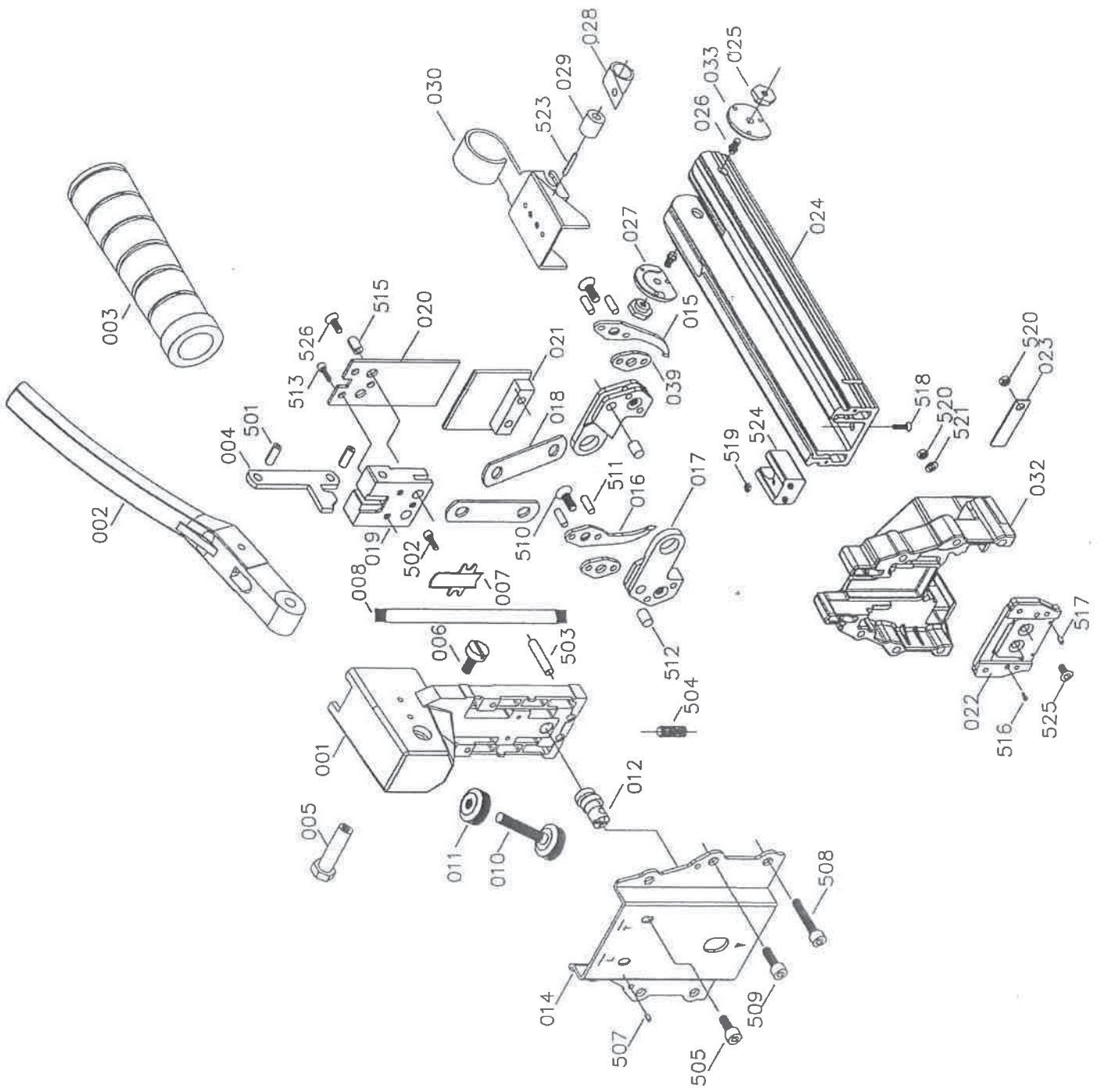
OPERATING & MAINTENANCE MANUAL



WARNING

BEFORE USING THIS TOOL, STUDY THIS MANUAL TO ENSURE SAFETY WARNING AND INSTRUCTIONS.

KEEP THESE INSTRUCTIONS WITH THE TOOL FOR FUTURE REFERENCE.



MODEL: MCS19-35

| Item | Parts No | Description | Q'ty | Spec. | Item | Parts No | Description | Q'ty | Spec. |
|------|------------|--------------------|------|---------------------|------|-------------|----------------------|------|-----------------|
| 001 | HAA-P22 | BODY UNIT | 1 | | 501 | BAA050020 | SPRING PIN | 2 | Ø5-20 |
| 002 | A01102701 | HANDLE | 1 | | 502 | BAC0404062 | HEX,SOC.HD,BOLT | 2 | M4 x 0.7-6 |
| 003 | A00300301 | HANDLE GLEEVE | 1 | | 503 | A00104701 | ROD | 2 | Ø4.9-17.5 |
| 004 | A01103001 | LINK | 1 | | 504 | BAC0306142 | HEX.SOC.HDLESS.BOLT | 1 | M6 x 1-14 |
| 005 | A00300501 | PIVOT PIN | 1 | | 505 | BAC0605142 | HEX.SOC.HD.BOLT | 2 | M5 x 0.8-14 |
| 006 | A00300601 | PIVOT SCREW | 1 | | 507 | BAA030010 | SPRING PIN | 4 | Ø3-10 |
| 007 | A01102801 | COVER | 1 | | 508 | BAC0405502 | HEX.SOC.HD.BOLT | 2 | M5 x 0.8-50 |
| 008 | A01102901 | SPRING | 1 | | 509 | BAC0405302 | HEX.SOC.HD.K)LT | 4 | M5 x 0.8-30 |
| 010 | A00301001 | ADJUSTMENT SCREW | 1 | | 510 | A00106201 | HEX.SOC.FLAT COUNTER | 2 | M5 x 0.8-12 |
| 011 | A00301101 | ADJUSTMENT NUT | 1 | | | | SUNK HD.SCREW | | |
| 012 | A00101801 | ADJUSTING ROD | 1 | | 511 | A00104501 | PIN | 4 | Ø3.98-13 |
| 014 | A00302201 | FRONT PLATE | 1 | | 512 | A00104602 | PIN | 2 | Ø6.05-8 |
| 015 | A00102102 | RIGHT TEETH | 1 | 19MM | 513 | BAC0604102 | HEX,SOC.HD.BOLT | 2 | M4 x 0.7-10 |
| 016 | A00102202 | LEFT TEETH | 1 | 19MM | 515 | BAA060016-R | SPRING PIN | 2 | Ø6-16 |
| 017 | A00102301 | TEETH SEAT | 2 | | 516 | BAC0102101 | FLAT HD. SCREW | 2 | M2.6 x 0.45-10 |
| 018 | A00102401 | PLATE | 2 | | 517 | BAA020006 | SPRING PIN | 2 | Ø2-6 |
| 019 | A00301902 | BLOCK | 1 | | 518 | BAC0204222 | HEX.SOC.FLAT COUNTER | 1 | M4 x 0.7-2 |
| 020 | A00102605 | DRIVER | 1 | 19-35 , 9040 , 7437 | | | SUNK HD. SCREW | | |
| 021 | A00102702A | COVER UNIT | 1 | 8.65MM | 519 | BAD01041 | LOCK NUT | 1 | M4 x 0.7 |
| 022 | A01201101P | DRIVER GUIDE UNIT | 1 | 19-35 (2.35MM) | 520 | BAD01051 | LOCK NUT | 6 | M5 x 0.8 |
| 023 | A00102901 | PLATE | 2 | | 521 | BAE03051 | WASHER | 4 | Ø5.1 x Ø12 0.8T |
| 024 | A00103003 | MAGAZINE | 1 | 19-35 , 22-35 | 523 | BAA040016 | SPRING PIN | 1 | Ø4-16 |
| 025 | A00103102 | ROD UNIT | 2 | | 524 | A00105601 | BLOCK | 1 | |
| 026 | A00103203 | ROD | 2 | | 525 | BAC0204082 | HEX.SOC.FLAT COUNTER | 2 | M4 x 0.7. |
| 027 | A00103903A | RIGHT PUSHER GUIDE | 1 | | | | SUNK HD, SCREW | | |
| 028 | A00103401 | SPRING | 1 | | 526 | BAC0204062 | HEX.SOC.FLAT COUNTER | 1 | M4 x 0,7-6 |
| 029 | A00103501 | ROLLER | 1 | | | | SUNK HD, SCREW | | |
| 030 | A00103707A | PUSHER UNIT | 1 | 19-35 , 22-35 | | | | | |
| 032 | A00302501 | MAGAZINE SEAT | 1 | | | | | | |
| 033 | A00103904A | LEFT PUSHER GUIDE | 1 | | | | | | |
| 039 | A00105001 | WASHER | 2 | | | | | | |